






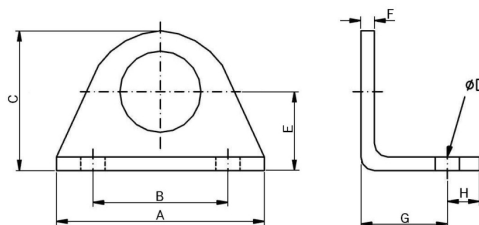
## Fixações para Atuadores Mini ISO - Série CSM

### Codificação

Fixação tipo Pés	Rótula Esférica	Fixação tipo Flange	Fixação Traseira Fêmea	Garfo para Haste	Pino para Garfo	Junta Flutuante
						
Código (Ø)	Código (Ø)	Código (Ø)	Código (Ø)	Código (Ø)	Código (Ø)	Código (Ø)
L10	K10	F10	D10	G10	I-10	JF12/16
L12/16	K12/16	F12/16	D12/16	G12/16	I-12/16	JF20
L20/25	K20	F20/25	D20/25	G20	I-20	JF25/32
	K25			G25/32	I-25/32	

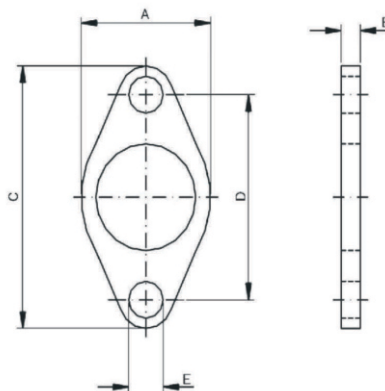
### Dimensional

#### • Fixação tipo Pés



Symbol/Bore	8	10	12	16	20	25
A	35	35	44	44	54	54
B	25	25	32	32	40	40
C	26	26	32	32	41	41
ØD	4.5	4.5	5.5	5.5	6.6	6.6
E	16	16	20	20	25	25
F	3	3	4	4	5	5
G	11	11	14	14	17	17
H	5	5	6	6	8	8

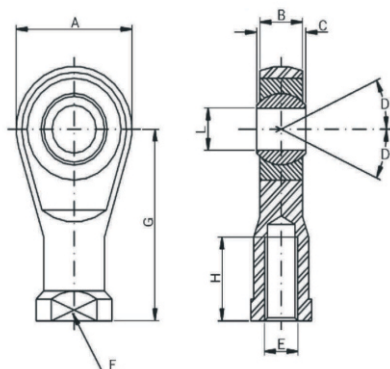
#### • Fixação tipo Flange



Symbol/Bore	8	10	12	16	20	25
A	20	20	24	24	32	32
B	3	3	4	4	5	5
C	40	40	52	52	64	64
D	30	30	40	40	50	50
E	4.5	4.5	5.5	5.5	6.6	6.6

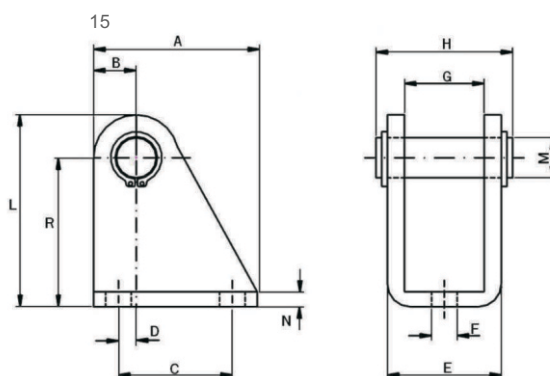
## Fixações para Atuadores Mini ISO - Série CSM

### • Rótula Esférica



Symbol/Bore	8	10	12	16	20	25	32
A	18	18	20	20	24	29	29
B	6	6	6.7	6.7	9	11	11
C	8	8	9	9	12	14	14
D	13	13	13	13	14	13	13
E	M4x0.7	M4x0.7	M6x1	M6x1	M8x1.25	M10x1.25	M10x1.25
F	9	9	11	11	14	17	17
G	27	27	30	30	36	43	43
H	14	14	14	14	17	21	21
L	5	5	6	6	8	10	10

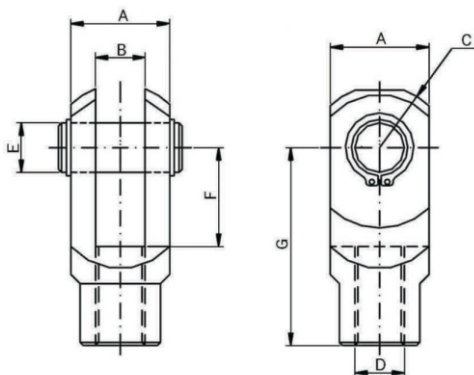
### • Fixação Traseira Fêmea



Symbol/Bore	8	10	12	16	20	25
A	20	20	25	25	32	32
B	5	5	7	7	10	10
C	13	13	15	15	20	20
D	1.3	1.3	2.5	2.5	4	4
E	13	13	18	18	24	24
F	4.5	4.5	5.5	5.5	6.6	6.6
G	8.1	8.1	12	12	16	16
H	17	17	24	24	30	30
L	29	29	34	34	40	40
M	4	4	6	6	8	8
N	2.5	2.5	3	3	4	4
R	24	24	27	27	30	30

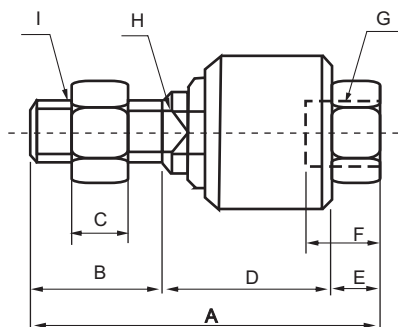
## Fixações para Atuadores Mini ISO - Série CSM

### • Garfo para Haste



Symbol/Bore	8	10	12	16	20	25	32
A	8	8	12	12	16	20	20
B	4.2	4.2	6.2	6.2	8.2	10	10
C	5	5	7	7	10	12	12
D	M4x0.7	M4x0.7	M6x1	M6x1	M8x1.25	M10x1.25	M10x1.25
E	4	4	6	6	8	10	10
F	8	8	12	12	16	20	20
G	16	16	24	24	32	40	40

### • Junta Flutuante



Symbol/Bore	8	10	12	16	20	25	32
A	28.5	28.5	35	35	54	61	61
B	11	11	13.5	13.5	21	22	22
C	3	3	4.5	4.5	5	6	6
D	14	14	17.5	17.5	27	32	32
E	3.5	3.5	4	4	6	7	7
F	7	7	7	7	11	14	14
G	M4x0.7	M4x0.7	M6x1	M6x1	M8x1.25	M10x1.25	M10x1.25
H	6	6	6	6	8	10	10
I	M4x0.7	M4x0.7	M6x1	M6x1	M8x1.25	M10x1.25	M10x1.25